

Gallery



BUSINESS AND PRODUCTION BUILDING, Riga, Latvia



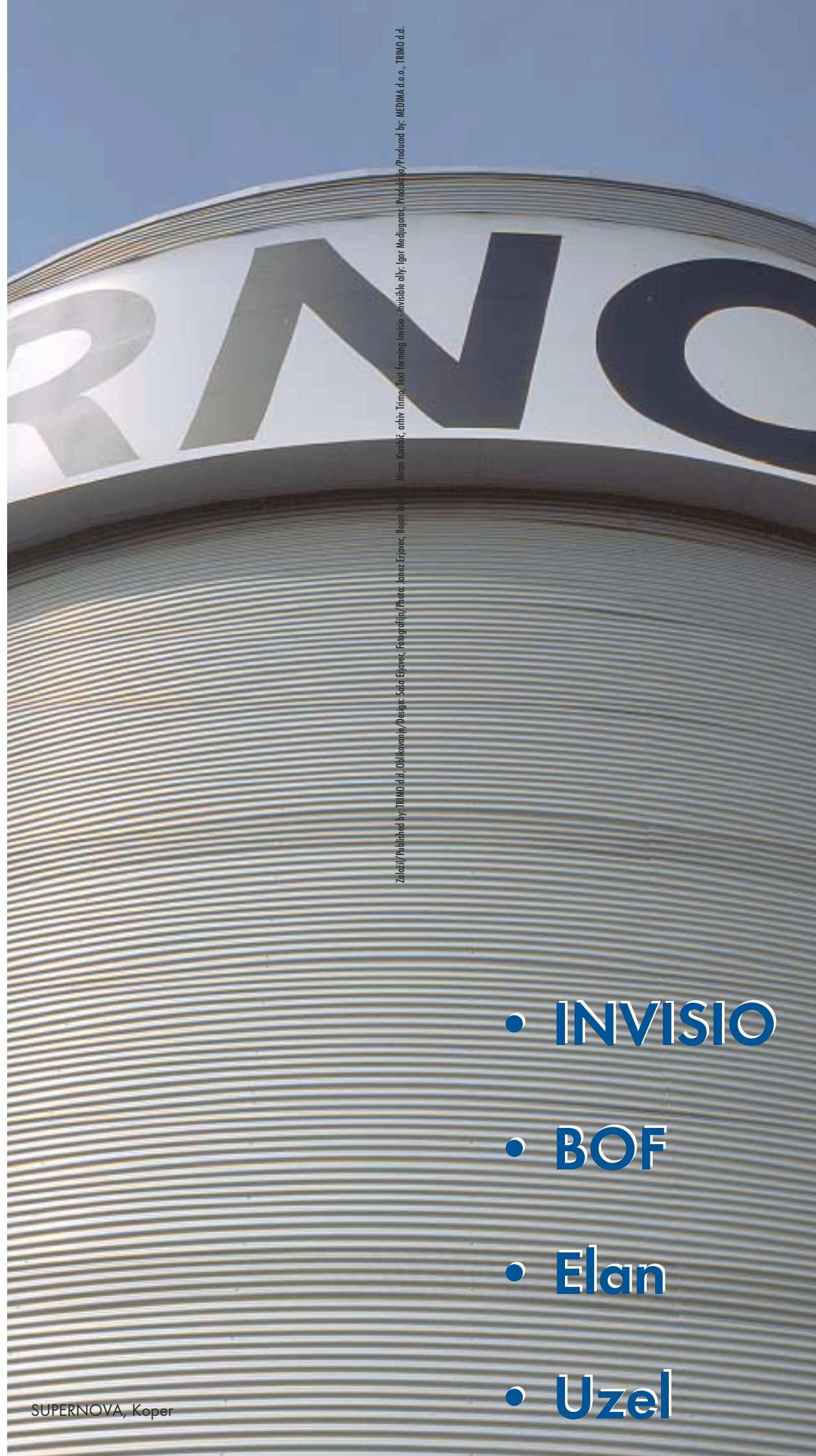
SPORTS HALL, Cerklje na Gorenjskem, Slovenia



UNIVERSITY SETTLEMENT, Tetovo, Macedonia



TRIMO d.d.
ENGINEERING AND PRODUCTION
OF PRE-FABRICATED BUILDINGS
PRIJATELJEVA CESTA 12, 8210 TREBNJE, SLOVENIA
T: +386 7 34 60 200, F: +386 7 30 44 569
I: www.trimo.si, E: info@trimo.si



Založnik/Publisher by TRIMO d.d. Oblikovanje/Design: Sisa Erganec, Fotografija/Photo: Janez Erjavec, Bajani d.o.o. Miran Kumbič, arhiv Trimo, Text forming Invisio - Invisibile ally - Igor Medjugorac, Predstavitelj/Produced by: MEDIMA d.o.o., TRIMO d.d.

• INVISIO

• BOF

• Elan

• Uzel

SUPERNOVA, Koper



TRIMO smooth panels

In scope of Trimoterm family of facade panels Trimo offers a smooth panel. The panel gives the facade minimalist and visually clean appearance.



Decorative profiles

Versatility of facades is assured by different forms of decorative profiles that might be also used as fixing elements of the facade. Various arrangement, colours and combinations of elements can achieve interesting architectural effects.



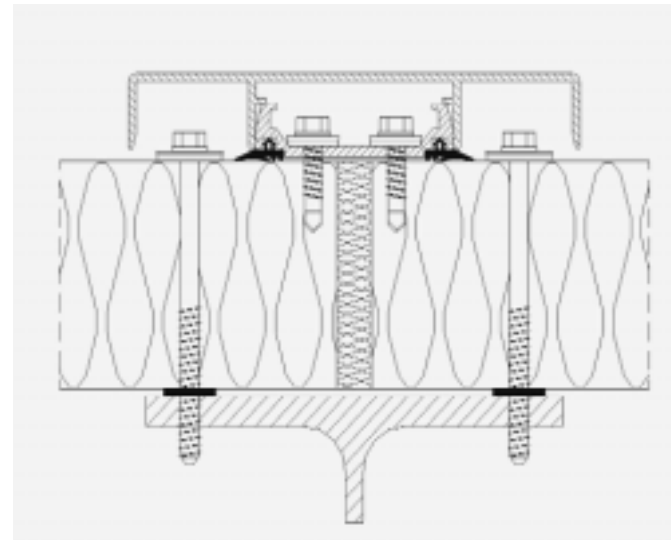
Award EUROPRIX Quality Seal 2002



The independent expert jury of the EUROPRIX 2002 Contest has awarded the official EUROPRIX 2002 Quality Seal for the web sites www.trimo.si in Category e-Business and Supporting SMEs in the Marketplace. The EUROPRIX 2002 Quality Seal is a proof that our web sites provides clear added value of multimedia to users.

New form of two-piece profile

A new possibility of fixing horizontal facades has been added to the basic fixing method. A new form of aluminium two-part profile has a completely smooth surface and protrudes 20 mm from the facade surface. It can be also used as a decorative element that is optionally arranged on a facade.



Roofing Trimiform

Trimiform roofing has been added to the range of Trimo roof systems. The new roofing is innovative in terms of structure and form. It is made of deformed steel galvanised and painted sheet metal. A layer of rock wool performing several functions: protection against condensate, thermal insulation, noise reduction and protection against fire spreading - is glued on the sheet metal from the bottom side. The form of the roofing represents also a novelty on the market since it distinguishes from the forms known by well-emphasised sides and more grinds, but still displays a spirit of traditionalism. The roof system excels in a range of additional elements and solutions of details.



Trimo news

Future now

INVISIO - invisible ally

Trimo in architecture

BOF - Building Of Fun

Complete solutions

UZEL

Gallery

Apology

In Informa No. 6, Article White- yellow - a wrong investor of the Opel showroom in Kranj has been stated by mistake. The investor of the showroom was not AvtoCommerce d.d. Ljubljana, but Avtotehna d.d. Ljubljana. We apologize most sincerely to Avtotehna, d.d.

Editorial Board of Informa



INFORMA - Editorial
 Prijateljeva cesta 12, 8210 Trebnje
 T: +386 7 34 60 319, F: + 386 7 30 44 569
 I: www.trimo.si
 E: informa@trimo.si

Dear friends of steel!

Do make autumn nice and take advantage of the coming days. Treat yourself to colours full of energy. Colours that glitter in autumn leaves of trees are part of our lives and perception. They serve as orientation, recognition, as warning and attraction.

And this picturesque feature has been added to our facades that are presented in this Informa. A sailboat in white and blue in front of the Elan building brings back the memories of summer days. Subdued shades of grey and beige reflect in the building of Uzel, and a blue grey combination of the BOF building becomes extremely beautiful in shine of night lights. All images are compatible in the Invisio system.

On this occasion we would like to inform you that October is an important month for Trimo because of a special event.

Everyday atmosphere was marked by 18th biennial exhibition of industrial design in Ljubljana where Trimo participated with its Trimiform roofing. The product communicates the values of the designer and the company. The draft idea and concept are results of the well-known Slovene designer, Dr. Vladimir Pezdirc. Our confidence in investing in design reflects in meeting of our buyers' requirements. The example of Trimiform roofing confirms the belief that mutual cooperation is important. And due to this reason we kindly invite you to implement your bold ideas and assist us in creation and development of new products.

Pamper yourself, because autumn is nice, too.

Editorial Board of Informa



Future now

INVISIO - Invisible ally

Modern buildings serve to house numerous and various activities, forms of these buildings are extremely versatile and concepts are consequences of very different requirements. Nevertheless, all buildings of the modern era are similar in one point. Their power to express unique spirit that raises them high above the greyness of average is characteristic of them all. Therefore facade elements are of vital importance and the Invisio system so welcome.

Anyone who has ever tried to achieve a balance between technical properties and aesthetical accomplishment of the building knows, how very difficult it is to reach this. Situations where functional requirements and design ambitions develop into an incompatible and split project are quite frequent, time-consuming and difficult to solve. Any compromise reached seems weak and any solutions diminish the value of one or the other criterion.

These are the situations where Trimo can offer its real assistance. The sales range of Trimoterm fireproof facade elements is well known and their characteristics are incorporated into an endless number of buildings in Slovenia and abroad. Superior technical properties, fire-resistance, thermal and sound insulation and hygienic perfection are those characteristics that can help implement any architectural idea. Imaginative forms, a wide range of colours and profile forms as well as a set of unique final elements adjusted to individual buildings assure modern aesthetical appearance.

Invisio facade system as the latest novelty will place the limits of possibilities somewhat further. It offers very special design effects. Besides all other excellent properties of Trimoterm facade systems it enables also invisible fixing in case of performance of a vertical facade. The mechanics of fixing is discreetly hidden in a joint of panels and remains invisible after the assembly as well. A soft joint between two panels that is invisible to the naked eye offers an excellent basis for the design of a building.

Invisio facade system is designed as a complete group of solutions. A range of additional elements offers a unique appearance to a facade and functional efficiency to a

building. Numerous additional elements, possibility of special and adjusted performances and many colour shades significantly expand the possibilities of an architect or investor and assure such images to a facade that were completely impossible in the past. By thinking about invisible details that decide on the excellence of any facade Trimo has achieved a lot.

The fact is that facades are only rarely evenly burdened; usually they are under the influence of various burdens, e.g. strength connected to the suction of wind (Fig.1). Adjustable fixing method that up-grades the basic performance of a facade is also adjusted to various burdening. Reinforcement is mostly suitable for corner areas of buildings where tensile strength is higher (Fig. 2).

Visual dynamics of edges is designed in an equally careful manner. Fixing method on panel edges, such as the main beam and attic, along windows and doors is uniform. The final flashing is harmonised on all these places and therefore the appearance of the facade can be uniform. Special attention is paid to simple assembly and therefore elements can be positioned immediately before the work is done. In this way no damage could be caused to these elements on exposed places on a building site. Simultaneously, the performance of final elements enables simple dismantling or replacement (Fig. 3 - performance of a detail on the main beam).

Invisio is thus invisible, but only at first sight. All other properties rank it among the most visible solutions for the achievement of buildings that are perfect in terms of design and technique.

Metka Štepec, B.S.c.(Econ)
Andrej Novak, B.S.c.(Civ.Eng.)

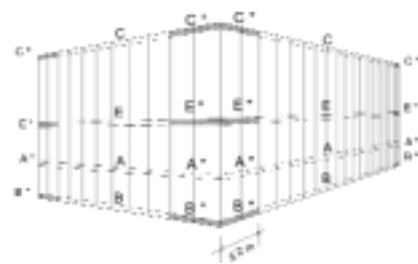


figure 1

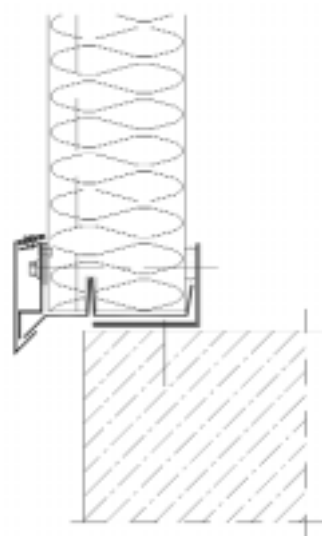
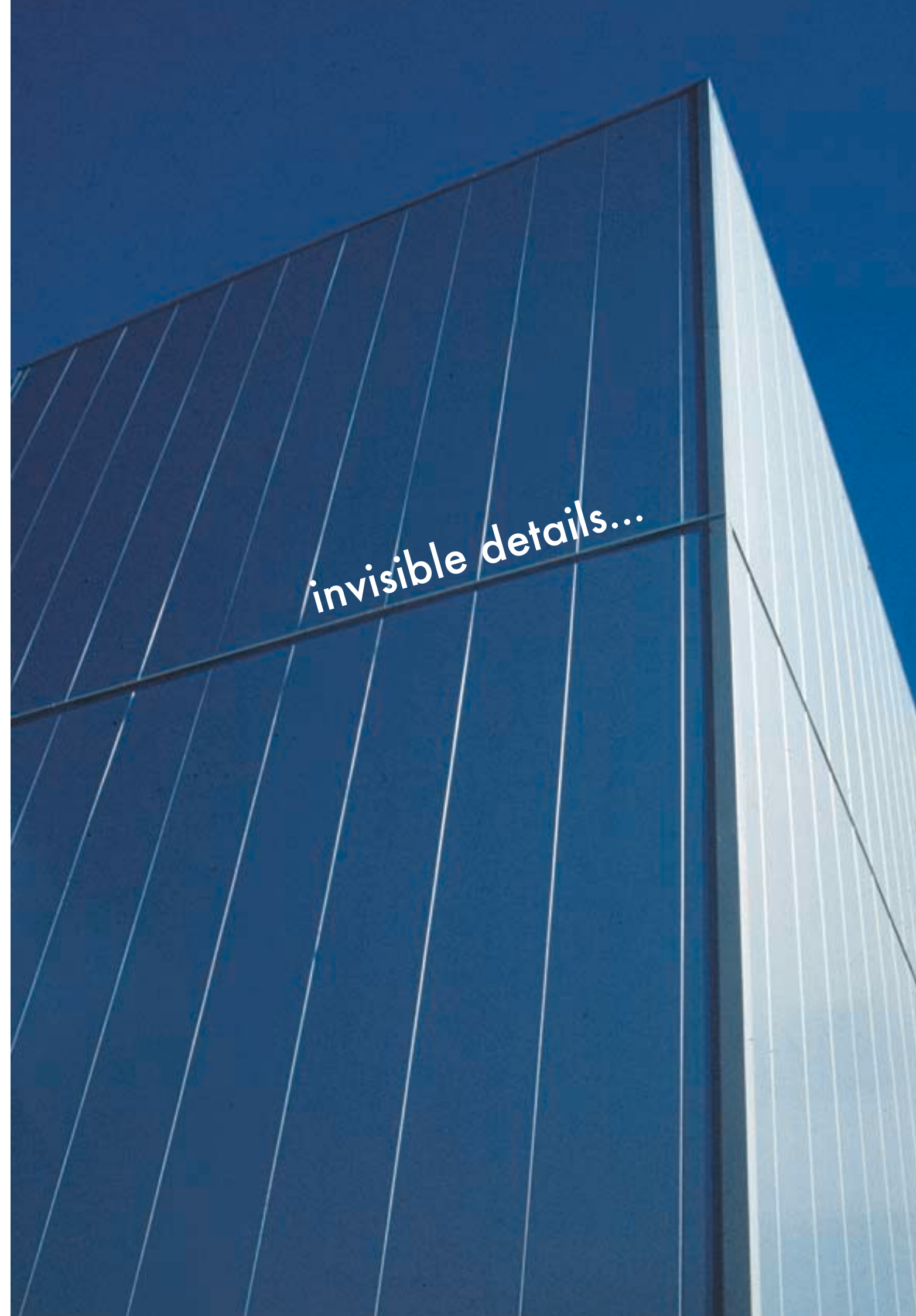


figure 2



figure 3



Trimo in architecture

BOF - Building Of Fun

The area of BTC in Ljubljana has been recently marked by a significant increase in the level of facade design. In most cases these new facades are reconstructions of the existing and former storage halls. This phenomenon has been mainly influenced by new trends in architecture that do not lean on the existing halls anymore; instead new halls have been constructed. The trend focusing on strong utilisation of buildings and the wish that buyers leave the shop as late as possible has an important impact on BOF.

The concept of the BOF shop, in the heart of sociable and shopping part of BTC, is new and original. The central part of the ground plan is a bar with a CD shop around which a shopping path leads to products of entertainment electronics and household appliances. When a shop closes the central part remains open late into the night.

The appearance of the building at night and immediate vicinity of Kolosej have influenced the facade design. During the day a large cube with the chosen intensive and strong blue colour of Trimoterm facade panels is quite outstanding. The panels have been fixed onto the existing structure of the storage building built in the 70's.

The emphasised monumental entrance is a sort of a counter-balance against the dominant building on the other side of the road. Lamellas made of metal sub-construction have been wainscoted by silver facade panels. Lamellas embrace the



staircase and entrance ramp and decrease towards the entrance. Thereby they create emphasised perspective that marks and draws towards a blue box of shopping and entertainment.

During the day the building is perceived completely differently than at night. In the course of the day the programme in the

Project data:

Ordering party: BeBe d.o.o. Ljubljana
Authors of architecture: Rok Kuhar, B.Sc. (Arch.) and BEBE studio (Mojca Fišer, B.Sc. (Arch.), Petra Bauer B.Sc. (Arch.), Saša Bunčič, B.Sc. (Arch.), Sandra Banfi Škrbec, B.Sc. (Arch.)
Elements:
Construction: Steel structure: 20 t
Facade: Trimoterm FTVMS-100: 1,200 m²

interior of the building changes as well as the external appearance of the facade.

At night the facade is only partly illuminated, only entrance lamellas and the entrance itself are well illuminated by with reflexive light coming from the rear side.

Rok Kuhar, B.Sc. (Arch.)



Trimo in architecture

BUILDING ELAN "MARINE 5"

Due to the expansion of production the investor Elan Marine d.o.o. has built a new production hall named Marine 5 that serves as a building for final assembly and testing of sailboats. The new production hall included in the factories Elan Begunje is located between the two existing buildings on the northern part of the premises and is functionally incorporated in the production process. An interesting feature of the project is a new method of sailboat assembly: from a central platform. It is made in the central part of the hall and what the height concerns it is made at the level of the entrance into a sailboat. In the hall sailboats are arranged at a right angle to the platform. When the assembly has been completed each sailboat separately is driven from the building to be tested and cleaned in an indoor basin. A test basin is a novelty in Elan production.

The concept of the building is a two-aisle, prefabricated hall, made of reinforced concrete; built at a ground floor that covers a surface of 2 x 24.00 x 42.50 m. The building has also an additional wing with the dimensions 12.00 x 30.50 m that has several storeys in one part. The roof structure of the hall is double pitch supports made of reinforced concrete, and the roof above the additional wing is flat. The substructures for the prefabricated concrete facade are made of concrete and they are completely made of steel for the Trimo facade.

The complete functional and constructional concept of the building, from the micro-location to the span among the supports (in both directions), purlins and size of entrance door is based on the process and sequence of the final assembly technology and testing of the sailboat E-52 (in the basin).

The design of a sailboat is also subordinated to functional and constructional requirements.

SEA BED - SEA - SAILBOAT

The bottom part of the building (connection of the building with the yard and in the band of transport height) is made of plastic washable roughcast that enables satisfactory pro-



tection of thermal insulation and of the building itself against damage of constant transports in immediate vicinity of the building. The cornice of the building and the roof represent protection against atmospheric influences.

The part above the roof (machine room) has been visually designed as a boat sailing on the waves.

A huge sea crab walking on the sandy seabed, in form of a deck crane, has

Project data

Ordering party: Gradis Jesenice
Architect: Sašo Krašovec, B.Sc. (Arch.)
Elements:
Construction: Steel structure, 6.5 t
Facade: Trimoterm FTV, 890 m²
Roof: Trimoterm SNV, 2,150 m²

brought a sailboat made.

The complete building with a useful surface of 2,730 m² has been constructed (with all technological installations, reconstruction of the existing building and layout of the outer surface) in three months.

Božena Kokalj, Technician
Sašo Krašovec, B.Sc. (Arch.)



Complete solutions

UZEL

Nowadays UZEL has been a symbol of quality and reliability, thanks to the development of its successful products and services and as a result of its long-established experience. UZEL's achievements are based on its skilled and creative workforce. With the impact of the globalisation that is transforming the world into a single market, UZEL aims to improve its position in the international arena and to become a global player. Respectively, UZEL has planned to become one of the best companies first in Europe, and then in the world.

Project data

Investor: UZEL MAKINA SANAYI
ve TICARET A.S.
Architects: TEM Architects, Mr.K.Ucvet,
Mr.H.Yazar
Structural design: TEM Engineering,
Mr. Zihni Tekin
Area: 11,000 m²
Elements:
Facade: Trimoterm FTVms - 100/60

The new premises UZEL Makina in Düzce (about 200 km east of Istanbul) consist of several factories in total area of 235,000 m².

For this purpose the latest construction technique has been used during the first phase of the project. The first phase has consisted of construction of Motor Factory, 19,800 m², where Trimoterm FTV 100 micro ribbed panels have been used. RAL 9006, 9007 and 1001 colours have been combined for the facade. Trimoterm facade panels have been used in total surface of almost 11,000 m².

Trimoterm fireproof panels have been chosen for this project after an intensive search for the most adequate and reliable product on the market. After long consultations with architects and intensive



meetings with the suppliers, Trimo Trimoterm panels have been chosen. Trimoterm panels have met all the expectations of the architects and the investor. External down water pipe cover design with Trimoterm panels represents complete satisfaction to all parties.

The steel structure with 5m grids is covered with horizontal Trimoterm panels. Aluminium strips are fixed to the vertical panel closings, in corresponding RAL colours. Round-edge corner panels are placed on the corners with vertical ribs. Down water pipes are covered with sharp-edge corner panels horizontally ribbed.

Gökhan Dündar, UZEL, Istanbul.

