

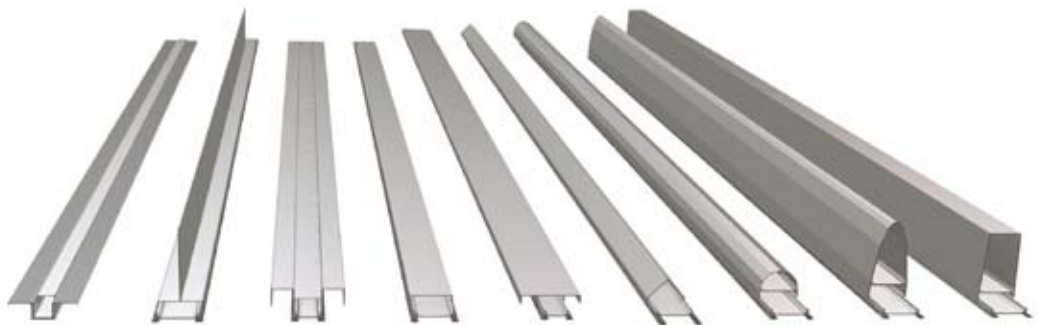


Decorative Elements for TRIMOTERM Façade Panels

A range of decorative aluminium profiles have been developed that will extend architect's creative expression by providing a wide variety of visual and compositional effects. These profiles have been designed as independent elements in terms of construction allowing them to be positioned in any part of the main facade. Long profile assemblies are possible with smooth joint connections.

Profile Construction

Profiles consist of a basic universal element that serves as the base on to which several profiles can be fixed. Profiles can be produced in several different colours, either to match the colour of the main cladding or differently to add a colour contrast and special visual effect.

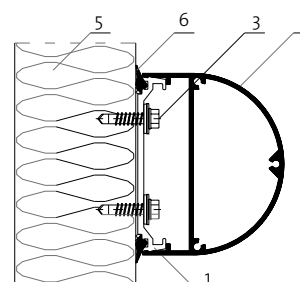
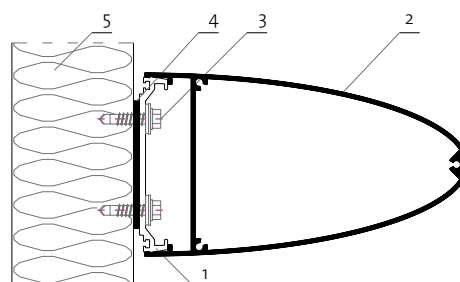


The selection of profiles described here is not complete as optional forms and arrangements of profiles over a façade can also be carried out. Possibilities are presented in further sections and should be considered as the inspiration for the development of new ideas.

Fixing

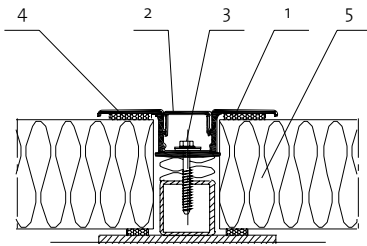
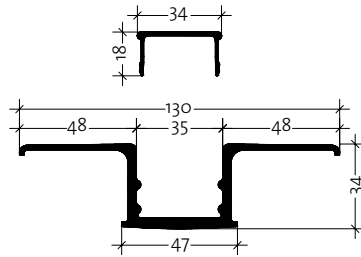
Assembly of larger aluminium decorative profiles allowing water flow between the profile and facade.

Assembly of decorative aluminium profiles showing continuous seal to allow water flow over the profile.



- 1 Load-bearing element
- 2 Decorative element
- 3 Fixing screw
- 4 EPDM seal
- 5 Trimoterm FTV panel
- 6 EPDM seal - continuous

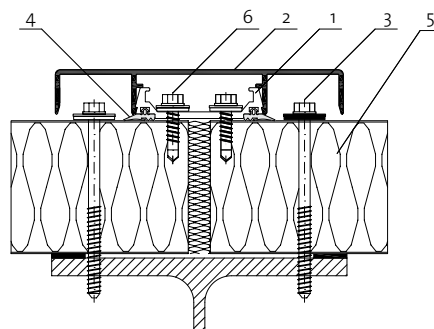
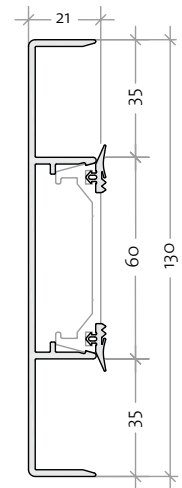
HF3 - Omega Profile



- 1 Load-bearing element
- 2 Decorative element
- 3 Fixing screw
- 4 EPDM seal
- 5 Trimoterm FTV panel

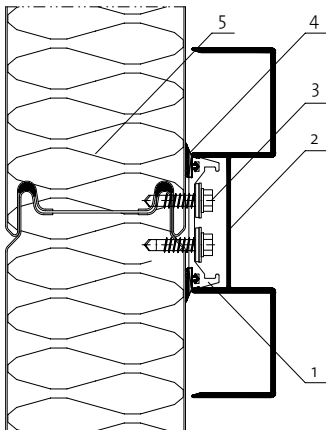
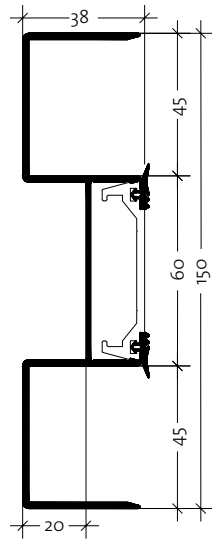
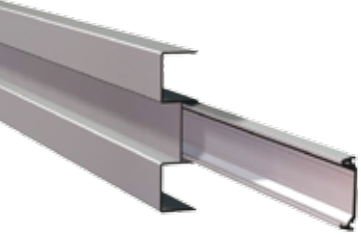


HF4 - Decorative Omega Profile



- 1 Load-bearing element
- 2 Decorative element
- 3 Fixing screw
- 4 EPDM seal - continuous
- 5 Trimoterm FTV panel
- 6 Fixing screw

HF6 - Decorative Omega Profile



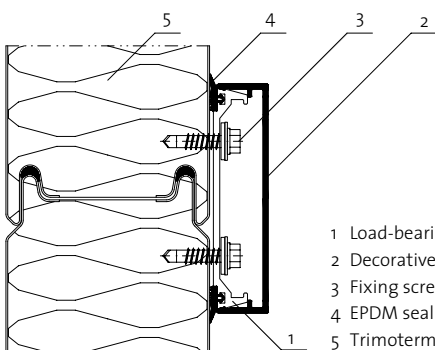
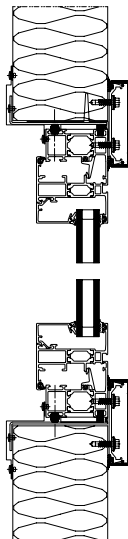
- 1 Load-bearing element
- 2 Decorative element
- 3 Fixing screw
- 4 EPDM seal - continuous
- 5 Trimoterm FTV panel



HF5 - Decorative Window Profile



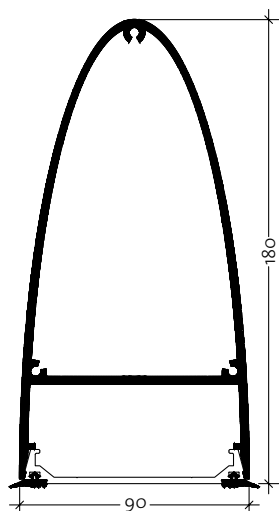
The use of a profile as a window flashing (a window is leveled to the external side of the façade).



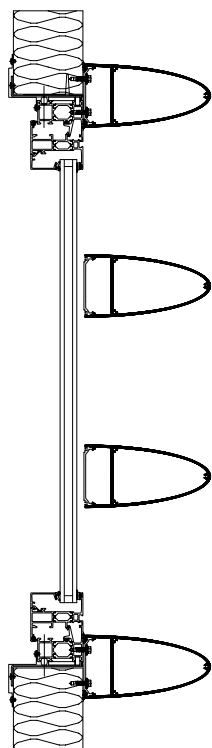
- 1 Load-bearing element
- 2 Decorative element
- 3 Fixing screw
- 4 EPDM seal - continuous
- 5 Trimoterm FTV panel



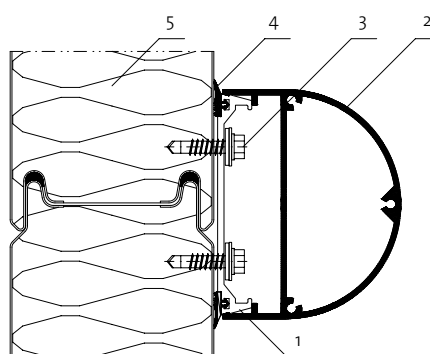
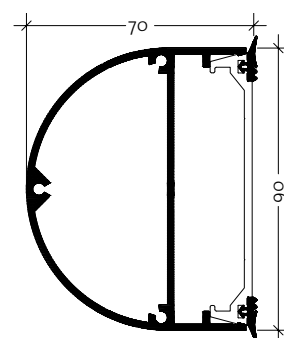
HF8 - Elliptical Profile



The profile can be used as a final element of the main beam and attic.



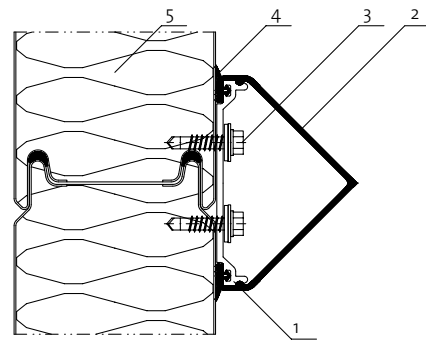
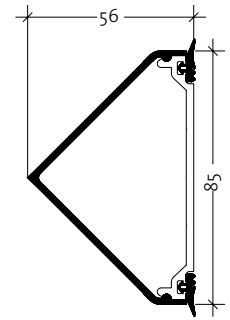
HF9 - Semi-circular Profile



- 1 Load-bearing element
- 2 Decorative element
- 3 Fixing screw
- 4 EPDM seal - continuous
- 5 Trimoterm FTV panel



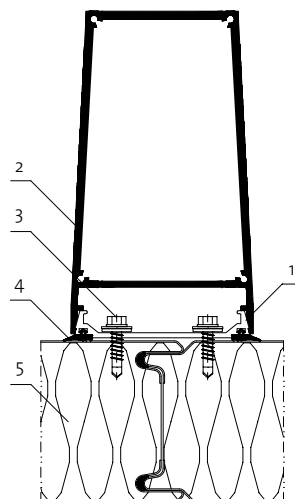
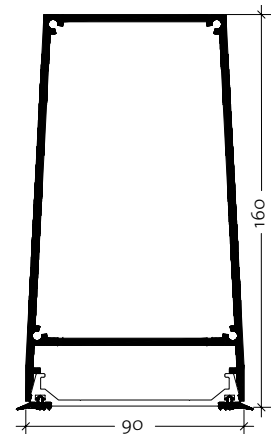
HF7 - Triangular Profile



- 1 Load-bearing element
- 2 Decorative element
- 3 Fixing screw
- 4 EPDM seal - continuous
- 5 Trimoterm FTV panel

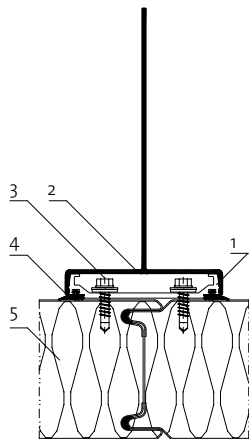
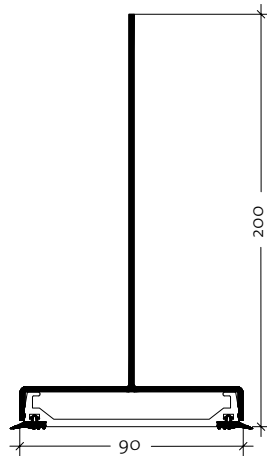
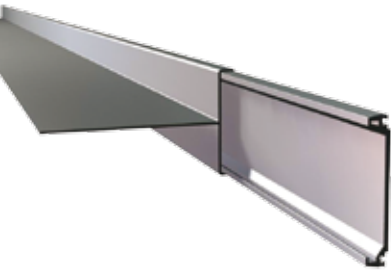


HF2 - Trapezoid Profile



- 1 Load-bearing element
- 2 Decorative element
- 3 Fixing screw
- 4 EPDM seal - continuous
- 5 Trimoterm FTV panel

HF1 - T Profile

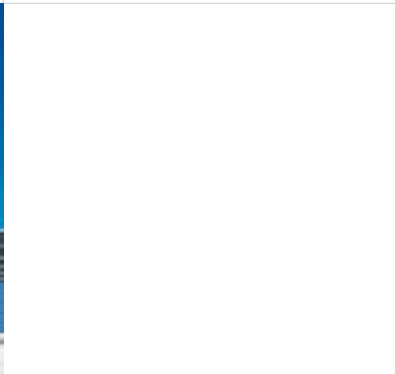
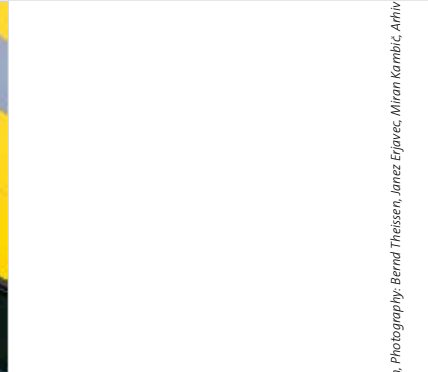
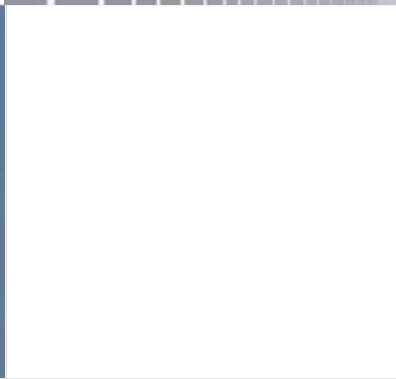
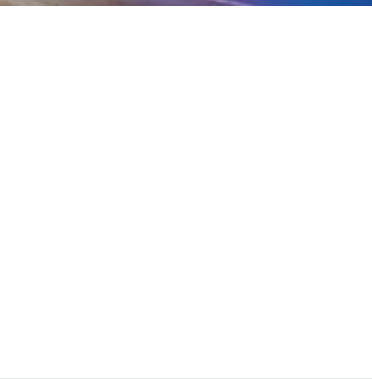
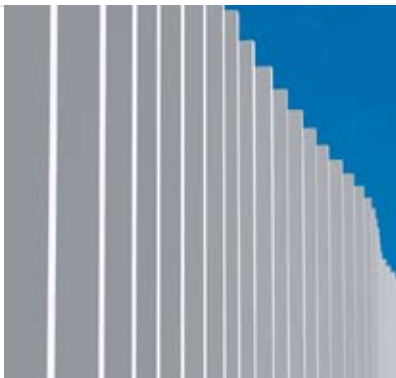
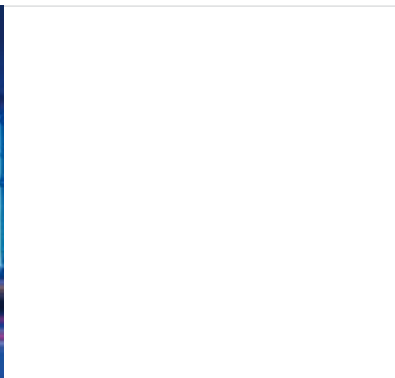


- 1 Load-bearing element
- 2 Decorative element
- 3 Fixing screw
- 4 EPDM seal - continuous
- 5 Trimoterm FTV panel



Numerous possibilities....

Various options of lighting effects can also be created.



Published by: TRIMO d.d., Design: Meta Gabrijelj, Edvin Nepuzljan, Photography: Bernd Theissen, Janez Erjavec, Miran Kambič, Arhiv Trimo, Printed by: Tiskarna Petric, Circulation: 3000/EN, 07/2008



Trimo, Engineering and Production of Pre-fabricated Buildings, d.d.
Prijateljjeva cesta 12, 8210 Trebnje, Slovenia
t: +386 7 34 60 200, f: +386 7 34 60 127
trimo@trimo.si, www.trimo.si

